

Timed Online

AUCTION

Farm Retirement

Equipment located at
9176 NE 38th Street, Ankeny, Iowa 50021

Opens: Wednesday, December 7

CLOSES: WEDNESDAY, DECEMBER 14 | 3PM 2022 CST

Loadout: Friday, December 16 from 9AM-3PM

MFWD TRACTOR

2002 John Deere 8320, 5,101 hrs., MFWD, ILS, powershift, deluxe cab, Active seat, 4 hyd. w/case drain, 3 pt. w/quick hitch, convertible PTO w/ 1000 shaft, GreenStar ready, AutoTrac ready, 42.5 gpm pump, wired for Ag Leader hyd. steering system, poly front fenders, front weight bracket w/(22) suitcase weights, instructional seat, 380/80R38 front duals, 480/80R50 rear duals, S/N RW8320P0004714

COMBINE

1998 Gleaner R62, 2WD, 1,894 sep./3,064 eng. hrs., CAH, level land, rock door, chopper/spreader, Maurer hopper ext., header control system, Ag Leader Y&M, wired for Ag leader CAN yield monitor system, swivel unload auger, Firestone 480/80R42 front duals, 16.9-24 rears, S/N R6268474 (NEW grain bin loading auger; Combine to be reserved for 5 days for load out assistance)

HEADS

Gleaner 8000, flex head, 25', poly reel tines, electric fore/aft, single drive, 3" sickle, S/N 25FRHN84312

Deutz-Allis 630, corn head, 6x30", steel snouts, intermeshing stalk rolls, Dose steel corn reel, S/N 063013116R8989

HEAD TRAILER

Shop-Built Head Cart, 20', wagon gear style, ext. tongue, rear hitch, 20.5x8.0-10 tires

PLANTER

Monosem NG+3, twin row box planter, 6x30", 7-1/2" split spacing, 3 pt., vacuum, hyd. drive, adj. spring down pressure, 1/2 width disconnect, (2) 50 gal. poly tanks, Sprayer Specialties electric drive pump system, Ag Leader Seed Tube Monitor Module, Ag Leader Liquid Product Control Module, Ag Leader Hyd. Seed Control Module, in-furrow liquid, Sunco pin adjust row cleaners w/ single star tooth row cleaner per row, rubber closing wheels installed, spiked closing wheels included, corn/soybean discs, front mount gauge wheels, S/N 05A298

TILLAGE EQUIPMENT

2011 Krause 1200T-630R Gladiator, strip till, 6x30", 3 pt., model 1010-200, OA row units, set up for dual products, 2) 20.5x8.0-10 pin adjust gauge wheels, S/N 1061 (If Buyer of this item is separate from Elk Creek caddy, the Buyer of the Elk Creek caddy is responsible for the removal of poly lines)

Elk Creek, single axle dual wheel 3 pt. caddy, 1,000 gal. horizontal poly tank, set up for dual product, Redball flow indicators, (2) Ag Leader liquid control modules, (2) 6-head distributors, (12) output hoses, Hypro hyd. driven pump, capacity 500HP, (if buyer of this item is separate from Krause Gladiator the buyer of the Elk Creek caddy is responsible for the removal of poly lines) 16.5L-16.1 duals, S/N 1006953

Ag Systems Inc. 6400, side dress applicator, 11x30", 21" spring mounted ripple coulters, 900 gal. poly cone tank, adjustable axle, rinse tank, hyd. wing fold, Ace hyd. driven pump, Banjo electric shutoff valve, Raven flowmeter and rate control valve, rear fill, 320/85R38 bar tires, S/N 1368

Brillion Zone Builder, in-line ripper, 6x30", 3 pt., strip till, (2) spring mounted ripple coulters /row, 1-1/2" pts., rolling basket row harrow, shank guards, S/N 192679

Aer Way AWST150-AG-4, double row vertical till, 12.5', 7-1/2" spacing, rolling basket harrow, (2) concrete ballast blocks 12.5L-15SL tandems, S/N 92100220002

GRAIN TRUCKS

1980 Chevrolet C70, shows 5,418 miles, 427 V8 gas, 5&2 trans., single axle, spring up/air down tag axle, 20'x96"x60" Midwest aluminum grain box, cargo doors w/grain gate, roll tarp, spring susp., air brakes, dual steel fuel tanks, 10.00R20 tires, spoked wheels, VIN C17DEAV103050

1946 Dodge, shows 17,000 miles, grain truck, 6 cyl. gas, 2-speed rear single axle, 13'x94"x36" wood box, 8.25x20 dual wheels

GRAIN TRAILER

2000 Donahue GS500-18D, gooseneck, 500 bu., 34,722 lb. GVWR, 12v hyd. pump, Shur-Lok electric roll tarp, spring susp., tandem axle, steel box, cargo doors w/grain gates, single cyl. Omaha Standard scissor hoist, adj. 2-5/16" ball coupler, 215/75R17.5 duals, steel wheels, VIN DC9GF22M7YDDC9205

GRAIN CART & GRAVITY FLOWS

Parker 685, grain cart, 14" corner auger, spout light, 1000 PTO, 24.5-32 diamond tread tires, S/N P97378

Parker 2500, gravity flow, LH single door & chute, ext. tongue, rear hitch, front ladder, 12.5L-15SL tires

DMI, gravity flow, center dump, rear hitch, rear brakes, front ladder 16.5L-16.1SL tires

Parker 4000, gravity flow, Parker gear, w/Knowles front axle, LH double doors, ext. tongue, rear hitch, rear brakes, front ladder, 425/65R22.5 tires, S/N 8040317

Parker 4000, gravity flow, Parker gear, LH double doors, ext. tongue, rear hitch, rear brakes, front ladder, 425/65R22.5 tires, S/N 7840377

Westendorf, gravity flow, LH single door & chute, ext. tongue, rear hitch, rear brakes, front ladder, 16.5-16.1SL tires

Killbros, gravity flow, LH single door, hyd. driven Power-Flite 6" auger, ext. tongue, rear hitch, rear brakes, front ladder, poly flex spout, 16.5-16.1 SL tires

SELF-PROPELLED SPRAYER

John Deere 6000, tri-cycle, 60' hyd. fold boom, single nozzle bodies on 20" spacings, 3-section shut-off, Top Air eye wash tank, Auto Farm receiver, Raven SCS440 controller, no foamer, crop shields, tow hitch, S/N N06000X017250

AUGER

Peck 1002 31, truck auger, 10"x31', hyd. drive, field hopper, cable lift, swivel wheel jack, ST205/75R14 tires, S/N 70514727

Westfield, poly auger hopper

TRAILER

Shop-Built Trailer, single axle, 10'x74", wood deck, ball hitch

BATWING MOWER

Woods HD210R, 10', 540 PTO, pull-type, single wing, 225/75R15 tires, S/N 0001479 (operational issues)

POLY TANKS

2,000 Gal. Vertical Poly Tank, flat bottom
1,550 Gal. Vertical Poly Tank, flat bottom
1,500 Gal. Vertical Poly Tank, flat bottom
Solar 1,500 Gal. Vertical Poly Tank, flat bottom
1,500 Gal. Vertical Poly Tank, flat bottom
1,050 Gal. Poly Tank, cone bottom, cracked top
(2) Solar 500 Gal. Vertical Poly Tanks, 2" valves

FUEL TANK

300 Gal. Fuel Tank, no stand

TECHNOLOGY

Ag Leader Integra, display standard unlocks, S/N 2012122569

Ag Leader Paradyme, receiver RTK unlock, 900 MHz

MicroTrak MT-3405D, dual rate controller w/harness, S/N 30746

OTHER EQUIPMENT

(2) Pacer, transfer pump, model SE2 UL E5HCP, pull start Honda GX160 gas engine

Hypro, transfer pump, model 1542P-5SP, 200 gpm, pull start gas engine

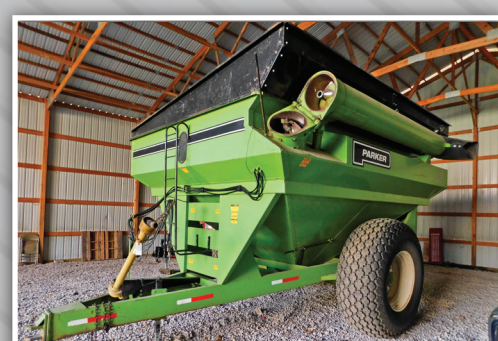
Banjo, centrifugal pump w/Briggs & Stratton 5 hp. engine

(2) Brillion, lift assist units for Brillion Zone builder

600 Gal. Horizontal Poly Tank cradle, was used in conjunction with Krause Gladiator and Elk Creek caddy

Perforated Aeration Tubes

Approx. (35) 7' Fence Posts



scan for details

LeRoy Cornwell

For information contact Duane Norton of Steffes Group at 515.432.6000 or 515.450.7778

515.432.6000 | SteffesGroup.com

Steffes Group, Inc., 2245 East Bluegrass Road, Mt. Pleasant, IA 52641



TERMS: All items sold as is where is. Payment of cash or check must be made sale day before removal of items. Statements made auction day take precedence over all advertising. \$35 documentation fee applies to all titled vehicles. Titles will be mailed. Canadian buyers need a bank letter or credit to facilitate border transfer.

